

DATA Board

Quarterly Meeting

March 19, 2026



CONNECTICUT
Policy and Management

Agenda

9:00–9:15

Welcome & Intros

9:15–10:15

State Data Plan Updates

10:15–10:30

Data Terminology

10:30

Adjourn



Welcome and Introductions



State Data Plan

2025 – 2026 Goals and Next Steps

Goal 1. Increase accessibility and visibility of existing data resources, including tools, software, and training materials.

- Work on 'open data access plans' to inventory online data resources
- Pilot AI tools for open / geodata portals

Goal 2. Make data easier to find and link by improving metadata and documentation.

- Continue development of publication guidelines (input) and regular open data / geodata audits (output)

Goal 3. Identify additional data-related training and resource requirements for agency staff.

- Start training needs assessment in spring 2025
- Develop training calendar for agency staff to know what's coming

2025 – 2026 Goals and Next Steps

Goal 4. Modernize job specifications for data and analytics roles.

- Set up working group with agencies to document challenges attracting / retaining staff into data, analytics, GIS roles

Goal 5. Develop new opportunities for an enterprise data sharing approach.

- Develop secure data enclave and data sharing agreements
- Rebrand P20 WIN to broader service focus
- Launch research collaborative

Goal 6. Develop data governance and data quality policies to support responsible use of AI.

- Starting data quality and data classification policies now
- Develop charter and focus for ADO quarterly meetings!



Policy Updates

Data Privacy Changes – Q&A session

PA 25-3 Section 14 OFA Summary

- Generally prohibits a **public agency from disclosing a person's nonpublic home, work, school, or agency appointment information**; requires the attorney general to give public agencies guidance on how to comply.
- The bill generally **prohibits public agencies, including their employees, appointees, officers, officials, or others acting on their behalf, from giving out a person's nonpublic home, work, school, agency appointment information** to any other person or entity that is not a public agency or an agency's associated actor.
- Under the bill, the disclosure prohibition **covers the person's (1) home address; (2) workplace and hours of work; (3) school and school hours; and (4) date, time, or place of a hearing, proceeding, or appointment with a public agency.**

Data Privacy Changes – Q&A session

PA 25-3 Section 14 OFA Summary

Disclosure is permitted, however, under the following circumstances:

1. the information is **needed for a criminal investigation**, unless the state's civil immigration detainer law prohibits its disclosure;
2. the public agency **customarily makes the information publicly available** such as for occupational or business license verification, voter registration, or research data;
3. the person, or their parent or guardian if they are a minor or not legally competent to consent, gives **written authorization** for it;
4. **state or federal law requires it** (e.g., for higher education student and exchange visitor visa sponsorship requirements or to comply with a judicial warrant or court order);
5. **state or federal law on personal health information** (e.g., HIPAA and its associated regulations) **allows it**, and the (a) recipient of the information is a covered entity (i.e. health care provider, plan, or clearinghouse) or the entity's business associate and (b) information is still covered by HIPAA's privacy and security protections; and
6. **state law allows it**, and the information is protected by privacy regulations, data use agreements, or other rules prohibiting disclosure to unauthorized parties.

Additionally, if the state's Freedom of Information law requires the information's disclosure, it must occur.

Data Request Processes

“The agency data officer, in consultation with the Chief Data Officer and the executive agency head, **shall establish procedures to ensure that requests for data that the agency receives are complied with in an appropriate and prompt manner.**”
(C.G.S. 4-67p(b))



Review Job Classes

Review and update job classes

Goal 4. Modernize job specifications for data and analytics roles.

- Focus is on ATTRACTING and RETAINING talented and dedicated professionals for data, analytics and GIS roles
- Next steps:
- Work group established and meeting since September
- DAS and OPM OLR engaged
- US Digital Response providing team of experts to help draft recommendations (job classifications and alignment with state HR and OLR approach)



Enterprise Data Sharing

Overview

Purpose

The **vision and mission** for DataLinkCT is to inform sound policies and practice through secure sharing of longitudinal data across participating agencies to ensure that individuals successfully navigate supportive services and educational pathways into the workforce.

The Secure Data Enclave supports DataLinkCT's mission by **strengthening the security, control, and oversight of agency data** within a protected environment that:

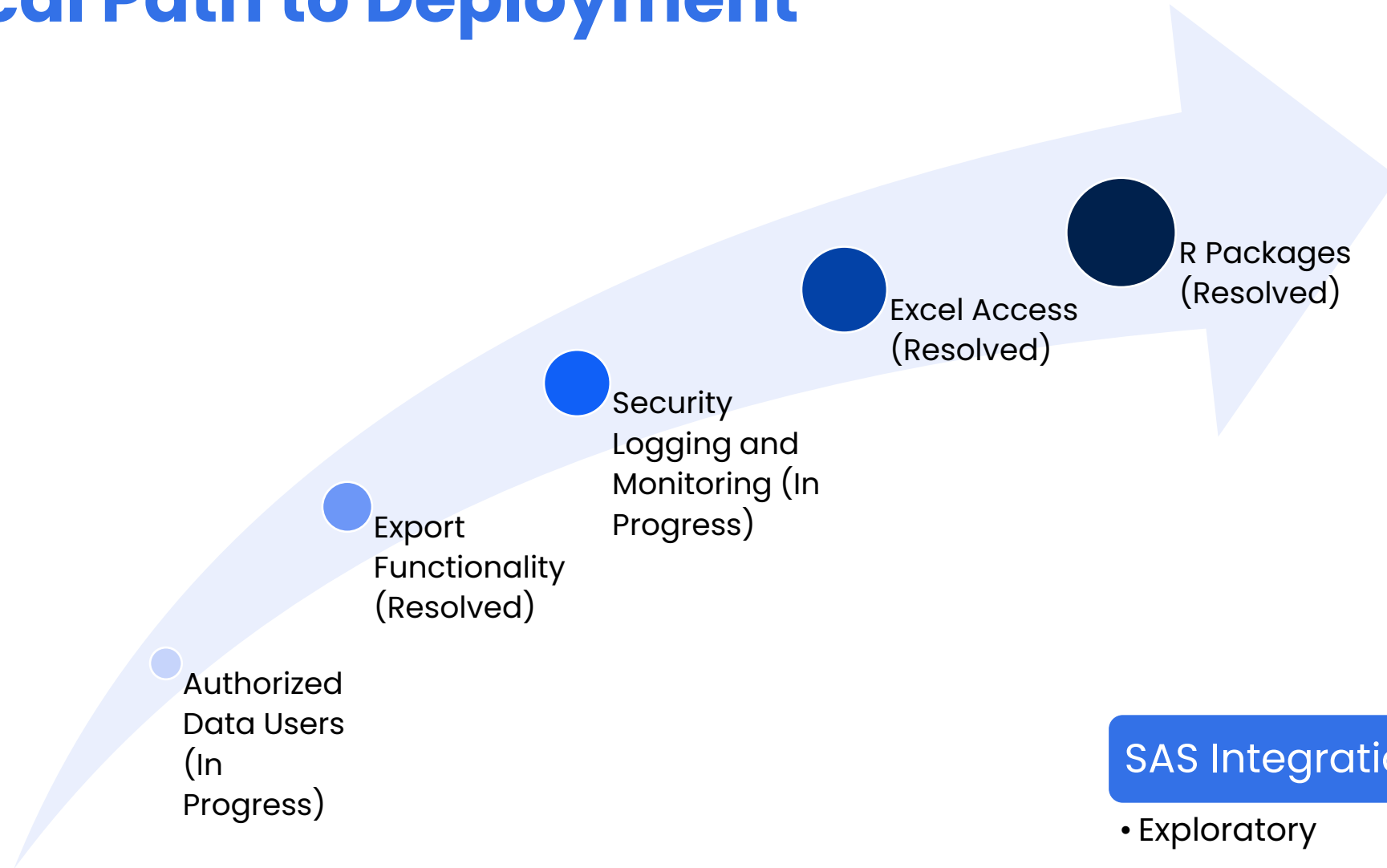
- Minimizes manual data transfers by reducing the need for physical movement of agency data
- Ensures secure matching of personal information to maintain privacy and quality
- Provides centralized hosting for agency data requests to streamline access
- Offers a controlled environment for data analysis

Project Status and Key Activities

As of 03/09/2026

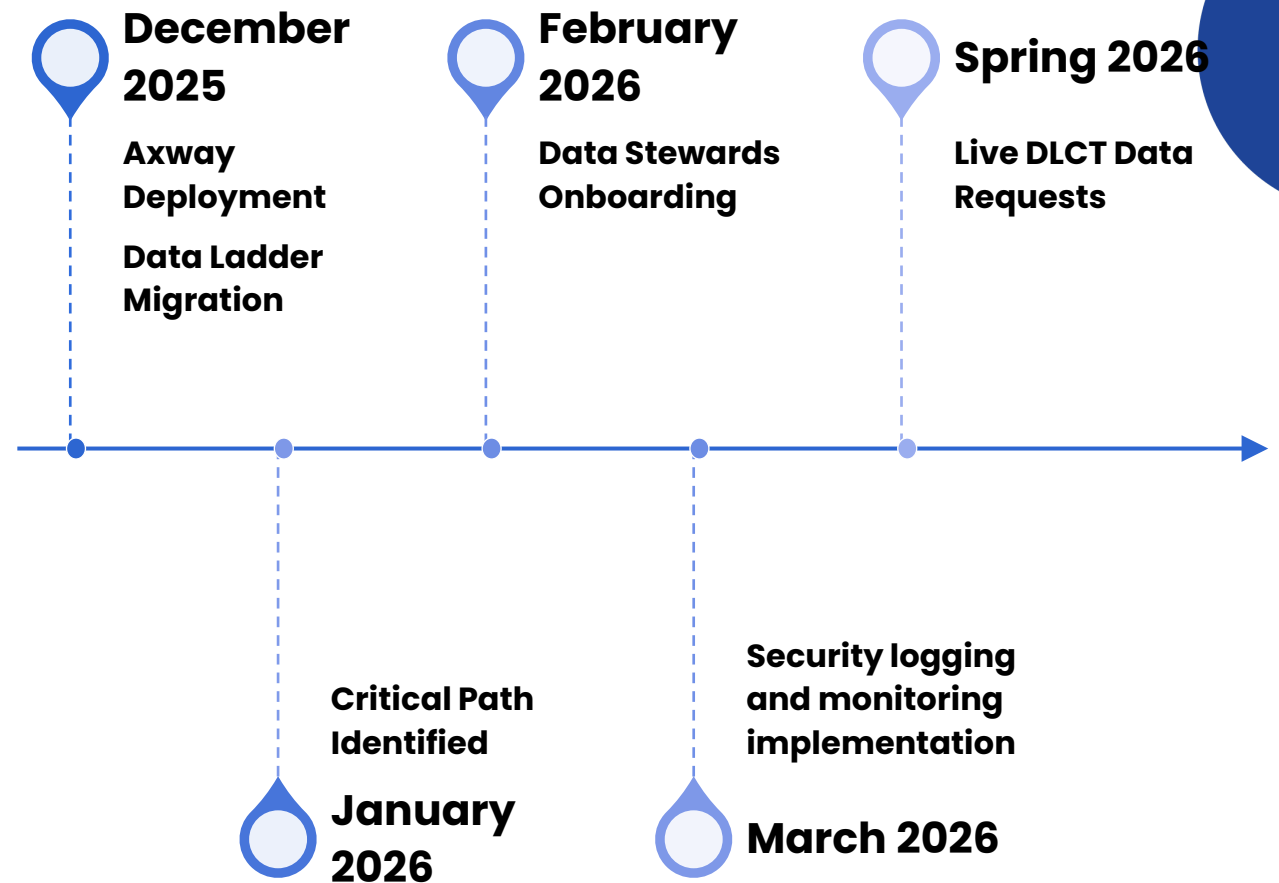
1. Agency Data Stewards Successfully Onboarded to Axway
2. Ongoing Implementation of Security Logging and Monitoring: Netwrix Auditor
3. Successful Migration of Data Ladder software for Data Matching
4. Development of Data User Support Workflow for the Enclave
5. Exploring Additional Analytical Tools (SAS)

Critical Path to Deployment



Timeline

- **December 2025** – All changes in Axway were implemented and deployed to production. Data Ladder was successfully migrated to the Enclave.
- **January 2026** – Tasks on the critical deployment path were identified for the Secure Data Enclave.
- **February 2026** – Data stewards onboarding occurred on 2/20.
- **March 2026** – Procurement and implementation of Netwrix Auditor.
- **Spring 2026** – Gradual approach to transitioning project to use the Secure Data Enclave.





Education and Workforce Pathways

DataLinkCT is the state's longitudinal data system

We link data to answer policy questions!

Who we are:

- **DataLinkCT** (DLCT), formerly P20 WIN, is administered by the Data and Policy Analytics team at OPM.
- **Data and Policy Analytics** is responsible for the state's data strategy, open data portal and geographic information systems data.
- DLCT is staffed by the **research and evaluation team** within OPM DAPA.

What we do:

- DLCT provides governance and legal framework for 15 agencies to share data.
- DLCT processes data requests for inter-agency linked data.
- DLCT analysts co-create and design research projects that assess and evaluate government programs and projects.

An integrated workforce system needs integrated data.

From the Data Quality Campaign:

Grace's Path to Success

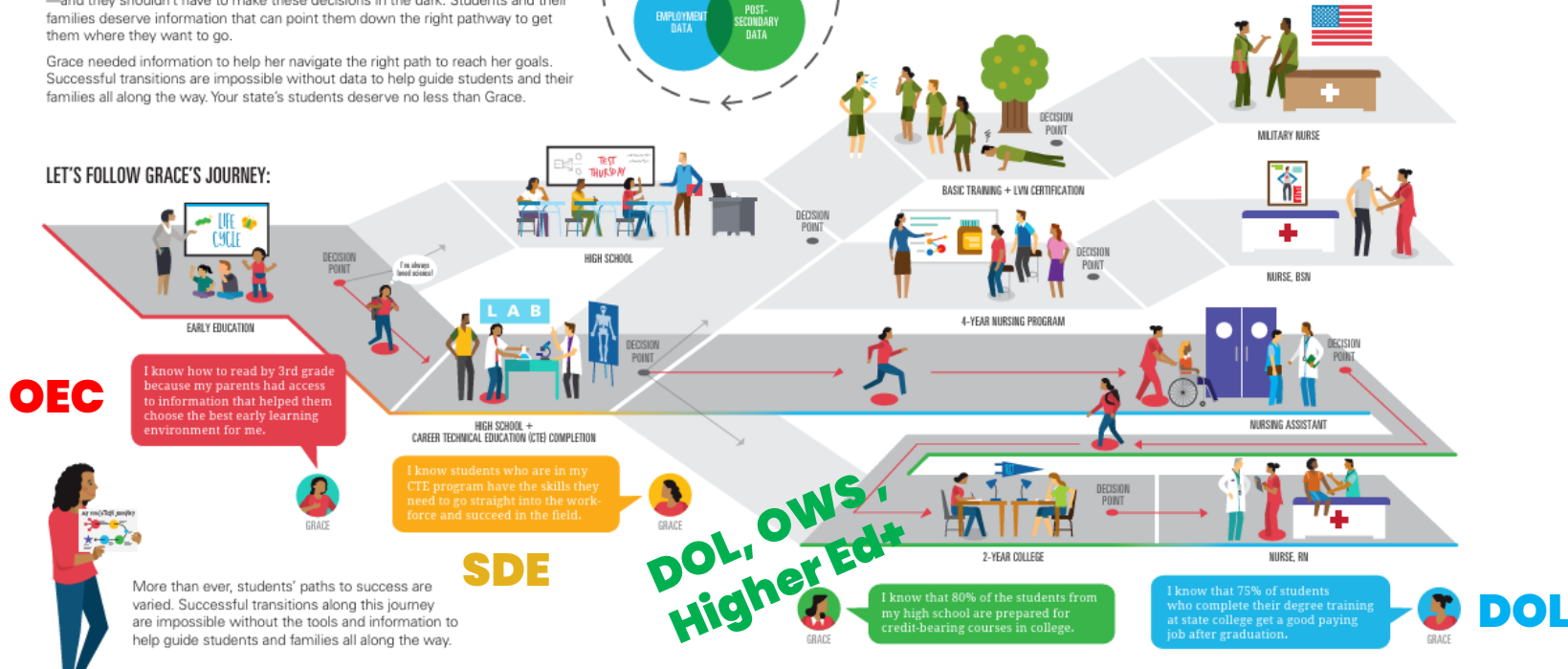
Information is critical to support student success all along the way.

Students' pathways to success are increasingly varied. But no matter the path, students must make choices that shape their future options and opportunities—and they shouldn't have to make these decisions in the dark. Students and their families deserve information that can point them down the right pathway to get them where they want to go.

Grace needed information to help her navigate the right path to reach her goals. Successful transitions are impossible without data to help guide students and their families all along the way. Your state's students deserve no less than Grace.



LET'S FOLLOW GRACE'S JOURNEY:



For guidance and best practice, see DQC's roadmaps to link, govern, and share data between early education, K-12, postsecondary, and the workforce.

dataqualitycampaign.org



What are the outcomes for the workforce system?

Workforce and Education Pathways Findings

The forthcoming report establishes foundational knowledge.

- Over the study period (2012–2023), agencies recorded over 700K program starts.*
- Pathways vary based on program purpose and duration.
- All programs experienced some wage growth within eight quarters of program exit/completion.
- The passage of 25–119 will enhance analytics in future reports.

* Data availability varies from program to program. Full data on all programs is available from 2017–2022.

The report addresses five questions.

These questions were co-created with the Office of Workforce Strategy, Department of Labor and Office of Policy and Management.

Q1: What are the wage and employment outcomes of Connecticut workforce training programs?

Q2: What are the wage and employment outcomes of Connecticut postsecondary, adult education and technical education programs?

Q3: What are the common education and workforce training pathways within Connecticut?

Q4: What are the employment and wage outcomes by career pathway?

Q5: Which education and workforce training pathways lead to the strongest wage growth?

The study data come from multiple state agencies.

Data sources:

- Department of Labor
- State Department of Education
- National Student Clearinghouse (2- and 4-year colleges nationwide)
- CT Technical Education and Career System

Time frame: 2012–2023*

*Data are not available for every program in every year

Findings focus on specific programs & outcomes:

The level of detail varies based on the program and data availability.

Workforce training programs:

- Wagner-Peyser
- WIOA Adult
- WIOA Youth
- WIOA Dislocated
- Trade Adjustment Assistance
- Jobs for Veterans State Grants
- Registered Apprenticeship
- Best Chance

Postsecondary, Adult and Career/Technical Programs:

- Two- and Four-year college programs
- Adult Education
- CTECS

Pathways:

- Career journeys explored by number of programs attempted
- Duration of career journeys

Wage & Employment Outcomes:

- Employment status
- Median wages
- Sector of employment

A few analysis caveats

This is the first analysis of its kind and there are some limitations to note.

- Data quality
- Measurement
- External Factors limit ability to attribute impact
 - Economic and Labor Market Conditions
 - Housing and Geographic Stability
 - Technology and Industry Transformation
 - Educational and Credentialing Lag Effects
 - Life Course and Age-Related Factors

Over the study period, agencies recorded over 700K program starts.

- Approximately 70K individuals started a workforce or education program each year.
- 20% of program starts were in workforce programs run by Department of Labor.
- 80% of program starts were in education programs with an emphasis on postsecondary education.

Pathways vary based on program purpose and duration.

- Two-thirds of participants starting a program completed a one-step pathway.
- Top 2+ step pathways include:
 - 4-Year College → 4-Year College
 - 4-Year College → 2-Year College
 - 2-Year College → 2-Year College
 - 2-Year College → 4-Year College
 - Adult Education → Adult Education
 - Wagner Peyser Only → Wagner Peyser Only
 - 4-Year College → 2-Year College → 4-Year College
 - 5+ programs
 - 4-Year College → 2-Year College → 2-Year College
 - CTECS → 2-Year College

All programs experienced some wage growth within eight quarters.*

Programs	Wage Growth Trend
Adult Education	
Registered Apprenticeship	
Best Chance	
CTECS	
Four-Year College	
JVSG	
TAA	
Two-Year College	
Wagner Peyser Only	
WIOA Adult	
WIOA Dislocated Worker	
WIOA Youth	

**The scale of wage growth depends on the initial wages in the first quarter after program exit.*

This report will be reproduced annually.

The next installment will include new data sources and focused analysis.

Passage of P.A. 25-119 adds data sources:

- Additional programs (and program detail) from Workforce Development Boards
- Post-secondary programs from CSCU, CT State and UConn

New data sources will enhance detailed program pathways

Enhanced analysis on programs with earned credentials

Exploration of common pathways

Data Request Pipeline

Incoming

- MDRC Evaluation of P-TECH Schools
- Federal Reserve Bank Boston Eastern CT Manufacturing Pipeline

Requests In Review/Development

- Democratizing Data Challenges – OEC
- Democratizing Data Challenges – DOC

Requests Approved

Data Sharing Agreements

In Development/Review

- Mental Health Access (#49)
- Sheff Outcomes (#51)
- OWS Career ConneCT Evaluation (#59)

Circulated for Signature

- HDC Hartford Youth Outcomes (#55)
- DCF education and employment outcomes for justice-involved youth (#56)
- Education, recidivism, and labor market outcome trajectories of youth sentenced to probation (#58)

Data Movement & Analysis

Scheduling Data Transfer

- UConn alumni labor market outcomes (#53)
- CSCU Postsecondary Outcomes (#31)

In Analysis

- CSCU Postsecondary Outcomes (#30)
- Housing Choice Vouchers (#40)
- Roberta Willis Scholarship Program Evaluation (#41)
- DOC Prison Education Outcomes (#54)
- CSSD/DCF Crossover Youth, Privacy Enhancement Technology Pilot (#52)

Pre-Publication Review

- Education and Workforce Pathways (#42)
- Disconnected & At-Risk Youth Report (43b)
- Roca Young Mothers Program Evaluation (#46)
- CSDE Postsecondary Labor Earnings (#50b)

Data Request Project Summaries

Phases: Pre-Publication Review OR Release

Request	Title	Requestor	Agencies	Summary
0042	Education and Workforce Pathways	OPM	SDE, CTECS, DOL	Assessing performance and outcomes of the state's workforce system, pursuant to Public Act 21-2, Section 250(e)
0043b	Disconnected and At-Risk Youth	OPM	DOC, DMHAS, DSS, JBCSSD	Calculate the number of disconnected youth; conduct analysis of disconnection based on original 2024 Disconnected Youth report
0046	Roca Young Mothers Program	Tufts University	SDE, DOL, DCF	To examine the service needs of participants and track their intermediate- and longer-term outcomes across a range of domains including behavioral health, education and employment, parenting, child development, and systems involvement.
0050b	Analysis of Postsecondary Outcomes for Connecticut Youth	SDE	SDE, DOL	A descriptive study about how labor market outcomes differ between high school graduates and college graduates in Connecticut.
0027-0030	Postsecondary Wage and Employment Outcomes	CSCU	CSCU, DOL	Higher education/ postsecondary outcomes for annual reporting

Data Request Project Summaries

Phases: Data Match/Move OR In Analysis

Request	Title	Requestor	Agencies	Summary
0031	Postsecondary Wage and Employment Outcomes	CSCU	CSCU, DOL	Higher education/ postsecondary outcomes for annual reporting
0040	Housing Choice Vouchers	Yale	SDE, DOL	The effects of Housing Choice Voucher (HCV)-based rental assistance on short- and long-run academic and labor market outcomes in Connecticut cities
0041	Roberta Willis Scholarship Program Evaluation	UMass Boston, OHE	SDE, DOL, OHE, CCIC	Analysis of education and wage outcomes for Roberta P. Willis Scholarship Program recipients
0052	CSSD/DCF Crossover Youth, PET Pilot	DCF, Asemio	DCF, JBCSSD, DOL	Technology pilot to test privacy enhancing strategies for data matching; descriptive analysis for crossover youth study.
0053	UConn alumni labor market outcomes	UConn	UConn, DOL	Analysis of UConn alumni wages and employment outcomes
0054	DOC Prison Education Outcomes	OPM	DOC, DOL	Analysis of labor market outcomes for Unified School District #1 programs. This project explores how engagement with USD1 programs impacts labor market outcomes for incarcerated individuals once they are released from incarceration

Data Request Project Summaries

Phases: DSA In Development OR Circulated for Signature

Request	Title	Requestor	Agencies	Summary
0049	Mental Health Access	Yale, Sentencing Commission	DOC, DMHAS, DSS, JBCSSD	A study of intersections between the behavioral health and criminal justice systems. The Sentencing Commission has engaged the Yale SEICHE Center for Health and Justice to perform the analysis.
0051	Sheff School Choice Outcomes	UConn Neag School of Ed	SDE, DSS, DOL	Assess effectiveness of the interdistrict magnet school and Open Choice programs in the Hartford region, using lottery winner/non-winner data to explore outcomes for Hartford residents.
0055	CTData Collaborative Hartford Youth Outcomes	CTData	SDE, DOL, CTECS	A study of outcomes and disconnection of Hartford youth
0056	Education and employment outcomes for justice-involved youth	DCF	SDE, DOL, DCF, OHE, JBCSSD	Evaluation of DCF Juvenile-Justice Education Unit
0058	Education, recidivism, and labor market outcomes of youth sentenced to probation	UConn School of Social Work	SDE, DOL, DCF, JBCSSD	Education, recidivism, and labor market outcome trajectories of youth sentenced to probation.
0059	OWS Career ConneCT Evaluation	WestEd	SDE, DOL, UConn, CTECS, OHE, CSCU, DSS, OWS	Impact evaluation of the ARPA-funded Career ConneCT program

Data Request Project Summaries

Phases: Requests Incoming OR In Development

Title	Requestor	Agencies	Summary
Evaluation of P-TECH Schools	MDRC	SDE, DOL, CTECS	Evaluation of P-Tech Schools
Eastern CT Manufacturing Pipeline	Federal Reserve Bank Boston	OWS, DOL	An analysis of the Manufacturing Pipeline in Eastern CT
Democratizing Data Challenges – OEC	OPM/OEC		In Development
Democratizing Data Challenges – DOC	OPM/DOC		In Development



Open Data

Open Data Day 2026

OPM hosted an Open Data Day event for state agency staff

- 120+ agency open data users attended
- Presentations covered data privacy and security, data automation processes, AI tools for open data, accessibility and examples of open data in action from agencies

Open Data Access Plan Timeline



Open Data Access Plan Template

Goal #: [Insert Goal Title]

Vision

[Describe the desired future state for this goal. What will success look like?]

Approach

[Describe the overall strategy and steps for achieving this goal.]

State Agencies' Open Data Access Plan

[Month Year]

Contents

Purpose	3
Executive Summary	4
Agency Open Data Access Goals	4
Example(s)	4
Connecticut Green Bank.....	5
Department of Administrative Services.....	5
Department of Aging and Disability Services	6
Department of Agriculture	6
Department of Banking	6
Department of Children and Families.....	6
Department of Consumer Protection.....	6
Department of Correction	6
Department of Developmental Services.....	7

Data Request Processes

“The agency data officer, in consultation with the Chief Data Officer and the executive agency head, **shall establish procedures to ensure that requests for data that the agency receives are complied with in an appropriate and prompt manner.**”
(C.G.S. 4-67p(b))

Data Request Processes

Key Considerations	Sample Questions
Understand the Request	<p><i>Make sure you have a strong understanding of what's being asked:</i></p> <ul style="list-style-type: none"> <input type="checkbox"/> Who is the request from? (agency name, contact) <input type="checkbox"/> How was the request communicated? (formal letter, email, informal inquiry) <input type="checkbox"/> What data is being requested? (specific datasets, fields, populations, timeframe) <input type="checkbox"/> What is the stated purpose or policy rationale?
Identify Coordination Partners	<p><i>Bring relevant stakeholders to the table to understand next steps and respond appropriately. Stakeholders to consider might include:</i></p> <ul style="list-style-type: none"> <input type="checkbox"/> Legal Counsel (state agency and/or Attorney General's office) <input type="checkbox"/> Program directors (e.g., SNAP, Medicaid, UI, workforce development, student aid, corrections/reentry) and integrity leads (e.g., SNAP QC, Medicaid Program Integrity, UI fraud units) <input type="checkbox"/> Chief Privacy Officer / Chief Information Officer / Chief Information Security Officer <input type="checkbox"/> Any third-party vendors involved in the system or data platform <input type="checkbox"/> Governor's Office (policy directors and advisors, Deputy Chief of Staff) <input type="checkbox"/> Procurement team
Legal & Policy Considerations	<p><i>Partner with your legal counterparts to consider the following:</i></p> <ul style="list-style-type: none"> <input type="checkbox"/> What legal authority is cited for the request? <input type="checkbox"/> What relevant state statutes, policies, or MOUs apply? <input type="checkbox"/> Does the request contain contradictory information or unclear mandates? <input type="checkbox"/> Are there potential legal considerations or risks or potential public concerns associated with this request? (e.g., litigation, media coverage) <input type="checkbox"/> Does the request raise potential state or federal constitutional privacy issues (Right to Information Privacy)? <input type="checkbox"/> Does the request appear to impose new conditions on federal funding (Spending Clause coercion concern)? <input type="checkbox"/> Even if a federal agency requests data, disclosure may still require:



Address Guidance

Draft Document

Link:
<https://tinyurl.com/ctaddressguidance>

Email:
Ashley.Benitez@ct.gov

Submit your feedback by:
 March 27th




The image shows four pages of a draft document. The top-left page is the cover page with a table of contents. The top-right page is the introduction. The bottom-left page is titled 'Address Types' and includes a table for 'Location Addresses' and a section for 'Mailing Address'. The bottom-right page is titled 'Collecting, Managing and Formatting Addresses' and includes a diagram showing how a 'Street address is incomplete' is broken down into 'Address', 'Location', and 'Zip' fields.

Table of Contents:

- Introduction..... 2
- Address Types..... 3
- Collecting, Managing and Formatting Addresses..... 4
- Recommended Minimum Address Standard for Location Addresses..... 6
- Privacy..... 7
- Implementation of this Guidance..... 8
- Resources..... 9

Introduction: Addresses are one of the most important identifiers in government data. They provide a foundational reference point for understanding where public services are delivered. Addresses also function as a critical means for agencies to communicate with residents and facilitate enrollment in programs and services. Beyond public-facing services, addresses also support internal government functions such as asset management, compliance monitoring, and program administration.

Address Types:

Location Addresses	
123 Main Street, Hartford, CT 06103 (individual address)	456 Health Ave, Suite 200, Manchester, CT 06041 (a medical office)

Mailing Address: P.O. BOX 789
Hartford, CT 06115
(a Postal Office Box)

Collecting, Managing and Formatting Addresses: Address fields identified incorrectly. Diagram showing: Street address is incomplete (missing street name) → Address (123 Main St) | Location (Building #45 Hartford Apt 4 (undefined)) | Zip (6106) → Zip code is missing leading 0.

Address Formats



Location Addresses

123 Main Street,
Hartford, CT 06016
(individual's address)

130 Clinic Drive,
New Britain, CT 06051
(a medical office)

Mailing Address

P.O. BOX 789
Wolcott, CT 06716
(a Postal Office Box)



Latitude	Longitude
41.756323	-72.675663
41.648626	-72.783816

Address Quality Challenges Across State Programs

Addresses collected across state programs often lack consistency.

- Many records **cannot be geocoded** due to incomplete or incorrect address information.
- **Mailing and physical** addresses are frequently **mixed** in the same fields.
- **Variations in formatting** and data entry conventions reduce reliability for mapping and analysis.
- **Lack of standards** makes it difficult to match addresses across agencies.

Recommendations

- Provide clear instructions and examples of complete addresses.
- Include dropdowns whenever possible for fields like Town/Municipality.
- Evaluate existing datasets to identify incomplete or incorrect addresses and flag for revision.
- Review privacy laws and any agency policies and procedures before sharing any data.
- Consult with the Data and Policy Analytics Unit for any data sharing procedures.
- Coordinate with the State GIS Office for support with address validation tools and geocoding services.

Statewide Addressing Updates

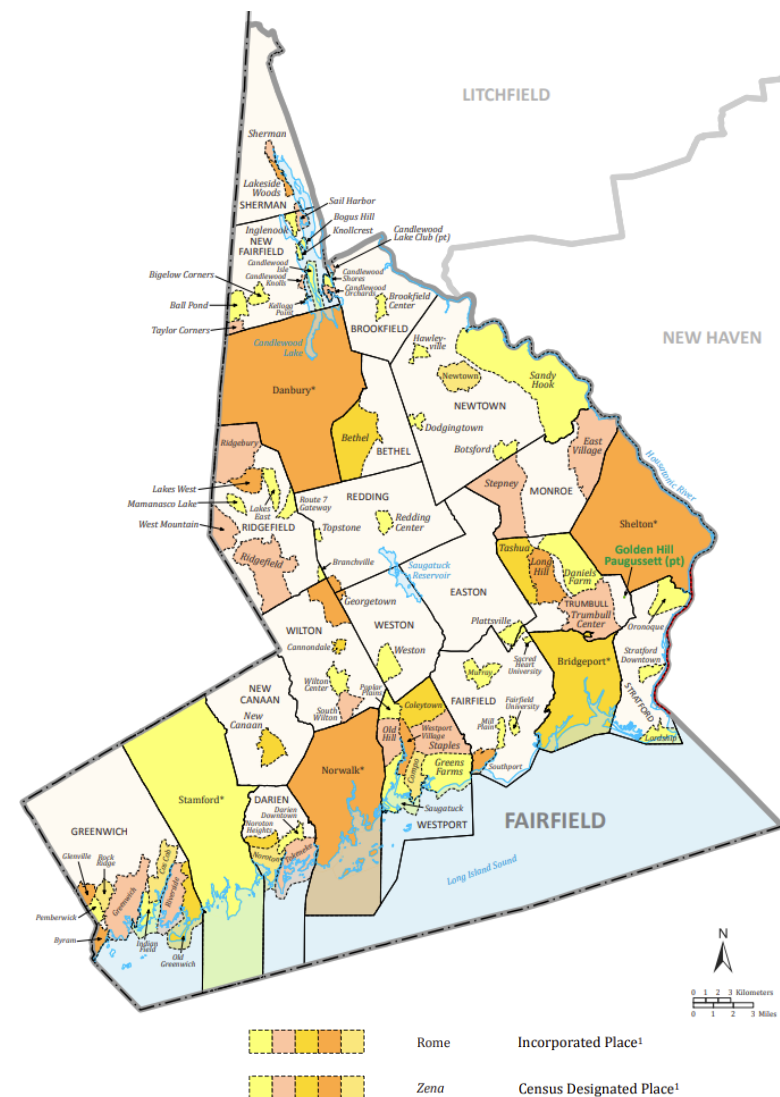
- Addresses collected by state agencies across many programs often lack consistency.
- Some records are impossible to geocode because of incomplete addresses, mailing addresses are mixed in the same fields, etc.
- Working in developing a guidance on **location address** for state administrative data.
 - Define difference between location versus mailing address
 - Define a schema for complete location address
 - Recommendations for implementation

Other location-related items

- Placename <> Town

A list of common spellings, villages, CDPs, and other per town to support alignment with the official 169 town geographies.

Village_Town_Spelling	Real_Town_Name	Category
BERTHEL	Bethel	Spelling
Bethel	Bethel	Town
BETHEL	Bethel	Town
Bethel CDP	Bethel	CDP
BETHEL HILL	Bethel	Neighborhood
BETHLE	Bethel	Spelling
EETHEL	Bethel	Spelling
GRASSY PLAIN	Bethel	Neighborhood





Terminology

Data (4-67o)

“Data” means the final version of statistical or factual information that: (A) Is reflected in a list, table, graph, chart or other non-narrative form that can be digitally or nondigitally transmitted or processed; (B) is regularly created or maintained by, or on behalf of, an executive branch agency; and (C) records a measurement, transaction or determination related to the mission of the agency or is provided to the agency by third parties pursuant to law.

Public data (4-67o)

“Public data” means any data collected by an executive branch agency that is permitted to be made available to the public, consistent with any and all applicable laws, rules, regulations, ordinances, resolutions, policies or other restrictions, requirements or rights associated with the data, including, but not limited to, contractual or other legal restrictions, orders or requirements.

Public Record (1-200)

“Public records or files” means any recorded data or information relating to the conduct of the public's business prepared, owned, used, received or retained by a public agency, or to which a public agency is entitled to receive a copy by law or contract under section [1-218](#), whether such data or information be handwritten, typed, tape-recorded, videotaped, printed, photostated, photographed or recorded by any other method.

Other terms!

- Personally-identifying information
- Confidential information
- Personal data
- Personal information